

SOPHIE VAN LINTHOUT

Group Leader Cardiovascular System | Nominee Voting Member



Scientific Development/ CV:

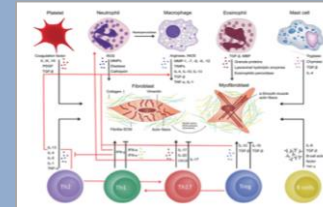


- Bio-engineer in Cell and Gene Biotechnology
- PhD in Medicine
- Marie-Curie Fellowship in Italy
- Post-Doc (AG Tschöpe)
- Private Instructor in Experimental Cardiology
- W2 call
- More than 10 years at the BCRT

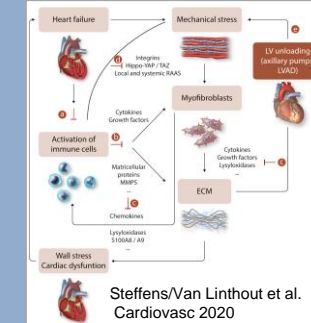


Expertise:

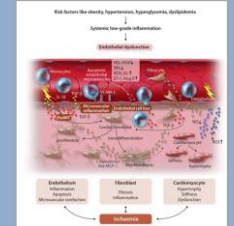
- immunoCardiology
- cardiac stromal cells
- crosstalk between immune cells and (cardiac) fibroblasts
- cardiosplenic axis
- inflammation: cause or consequence of heart failure?
- tailored immunomodulatory strategies



Van Linthout et al. Cardiovasc 2014



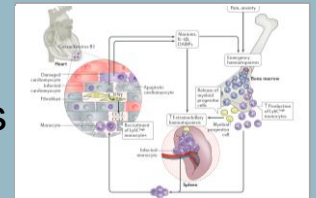
Steffens/Van Linthout et al. Cardiovasc 2020



Camici et al. Van Linthout Cardiovasc 2020

Relevant Projects/ Highlights:

- Mode-of-action left ventricular unloading
- Systemic vs cardiomyocyte-specific overexpression of S100A8/A9
- Comparison of left ventricle versus skeletal muscle-derived fibroblasts
- Virus-induced vs virus-associated myocarditis (*Nat Rev Cardiol*)
- MiRRor: comparing immune with cardiac signatures



Tschöpe et al. Van Linthout Nat Rev Cardiol. In Press.

SOPHIE VAN LINTHOUT

Group Leader Cardiovascular System | Nominee Voting Member



BIH Regeneration
BIH Center for Regenerative Therapies (BCRT)

2020

Unique island
of interdisciplinarity

Immuno
Musculoskeletal
Cardiovascular
Tissue Homeostasis
Genetics & rare diseases



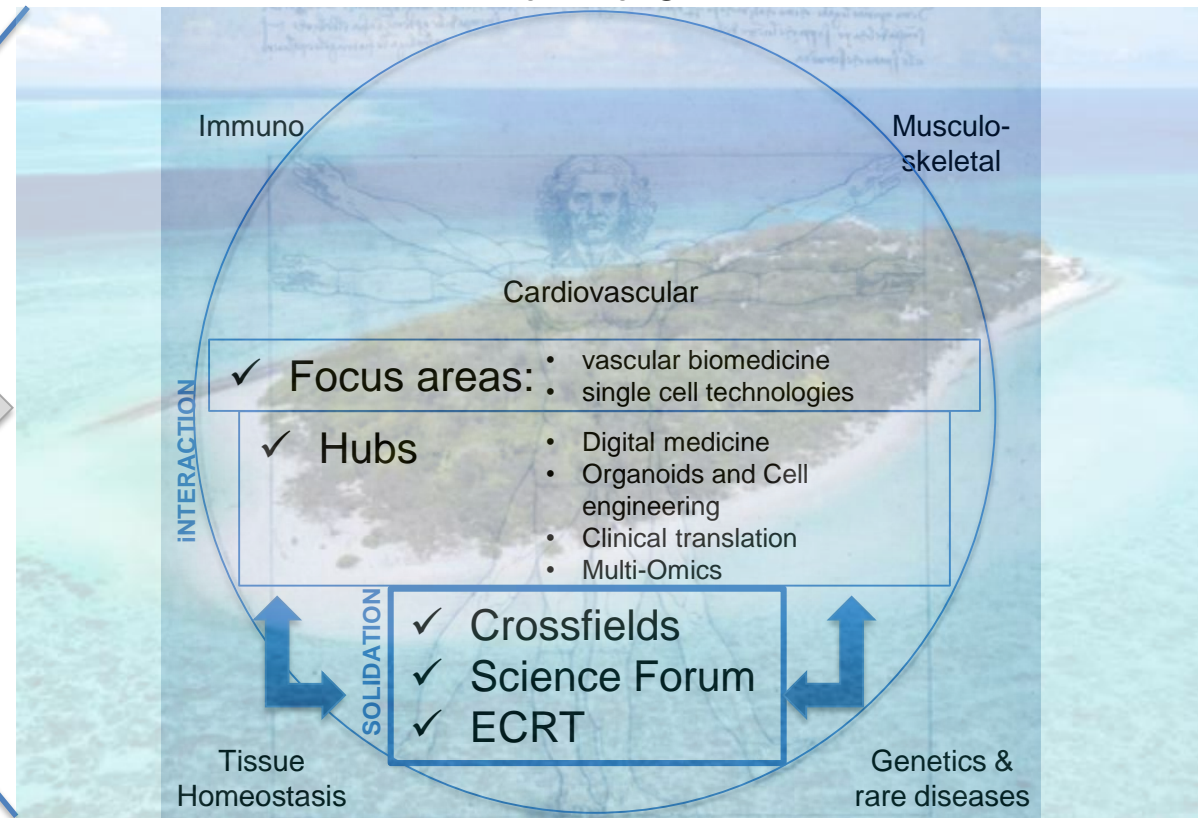
Fostered by

- ✓ Crossfields
- ✓ Science Forum
- ✓ ECRT

BIH Regeneration
BIH Center for Regenerative Therapies (BCRT)

Future

Solidation and integration of interdisciplinarity
within the BIH



In strong interaction
with the Cardiovascular
System

