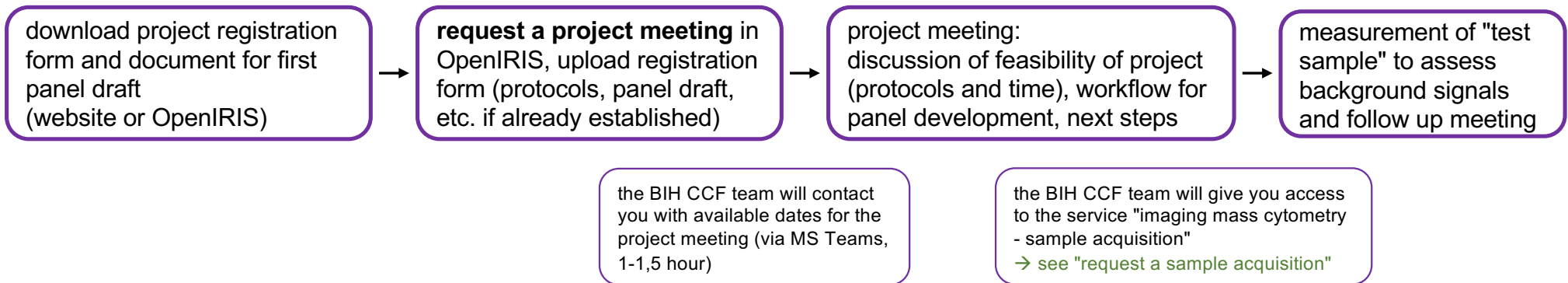
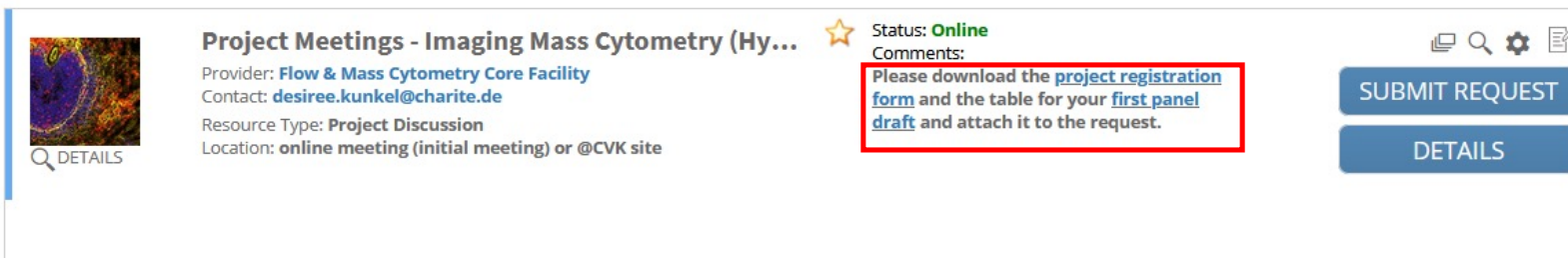


# Imaging Mass Cytometry – getting access



[iris.charite.de](https://iris.charite.de)



**Project Meetings - Imaging Mass Cytometry (Hy...**

Provider: **Flow & Mass Cytometry Core Facility**  
Contact: [desiree.kunkel@charite.de](mailto:desiree.kunkel@charite.de)  
Resource Type: **Project Discussion**  
Location: **online meeting (initial meeting) or @CVK site**

Status: **Online**  
Comments:  
Please download the [project registration form](#) and the table for your **first panel draft** and attach it to the request.

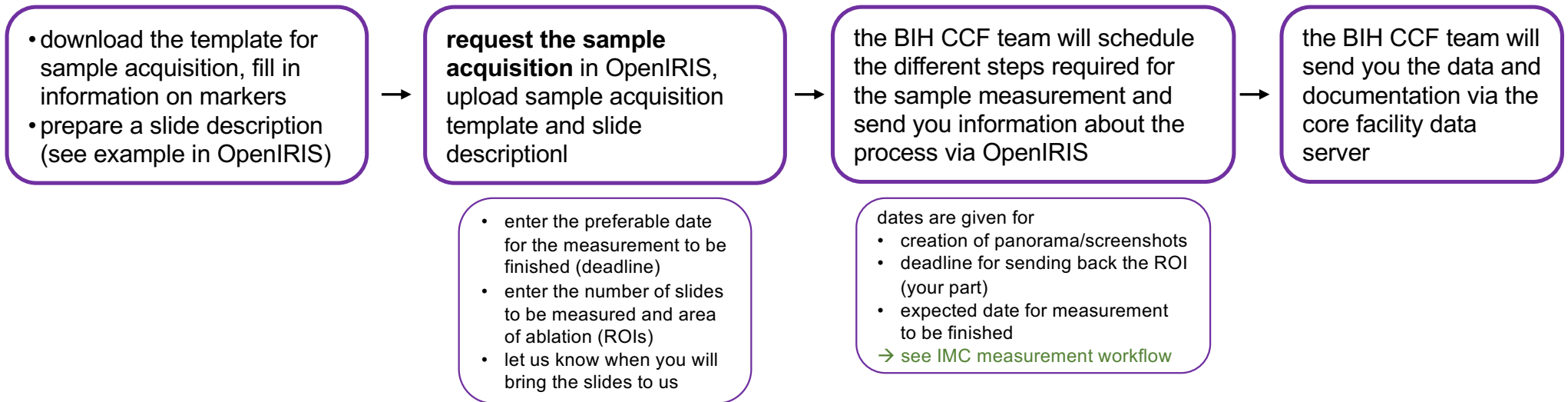
SEARCH DETAILS

DETAILS

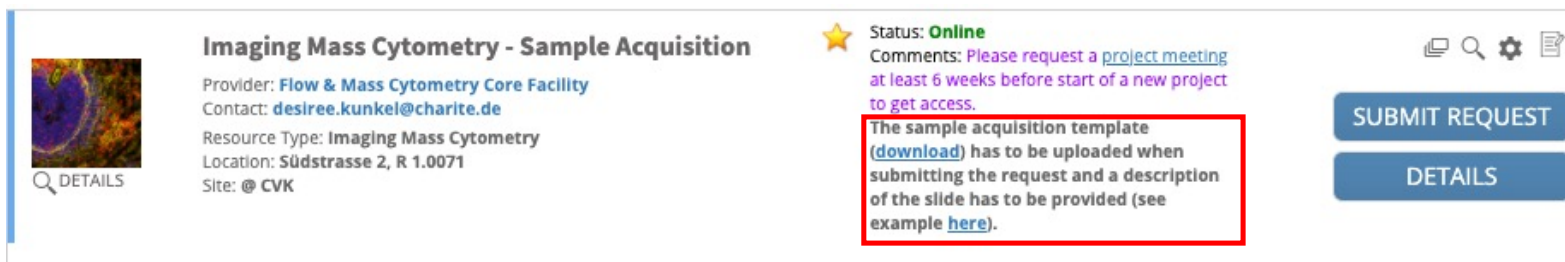
SUBMIT REQUEST

DETAILS

# Imaging Mass Cytometry – request a sample acquisition



[iris.charite.de](https://iris.charite.de)



**Imaging Mass Cytometry - Sample Acquisition**

Provider: [Flow & Mass Cytometry Core Facility](#)  
Contact: [desiree.kunkel@charite.de](mailto:desiree.kunkel@charite.de)  
Resource Type: [Imaging Mass Cytometry](#)  
Location: [Südstrasse 2, R 1.0071](#)  
Site: [@ CVK](#)

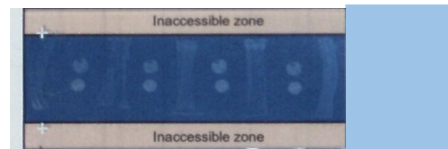
Status: **Online**  
Comments: Please request a [project meeting](#) at least 6 weeks before start of a new project to get access.

The sample acquisition template ([download](#)) has to be uploaded when submitting the request and a description of the slide has to be provided (see example [here](#)).

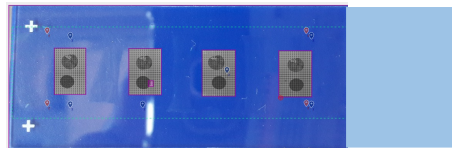
[SUBMIT REQUEST](#)  
[DETAILS](#)

# IMC measurement - workflow

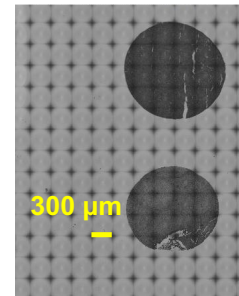
we take a photo of the slide for upload into the software



we acquire a panorama of the selected tissue sections

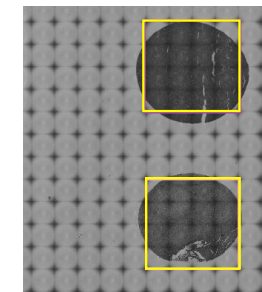


we will send you a .jpg image of all panorama(s) of your slide



one "tile" =  $0.3 \times 0.3 \mu\text{m} = 0.09 \text{mm}^2$

you select your region(s) of interest (ROI) on the .jpg image of the panorama(s) by drawing a rectangle and send it back to the CCF



some remarks:

- $1 \text{mm}^2 = 2$  hours of ablation time
- ROIs can only be rectangles, no circles, free-hand polygons or trapezoids
- for titrations a one-row TMA with 'positive' and 'negative' tissue serves best, as you can fit 4 sections and thus 4 concentrations on one slide

we will send you the data and the acquisition protocol via the core facility server

we will transfer the ROI into the software and start the ablation